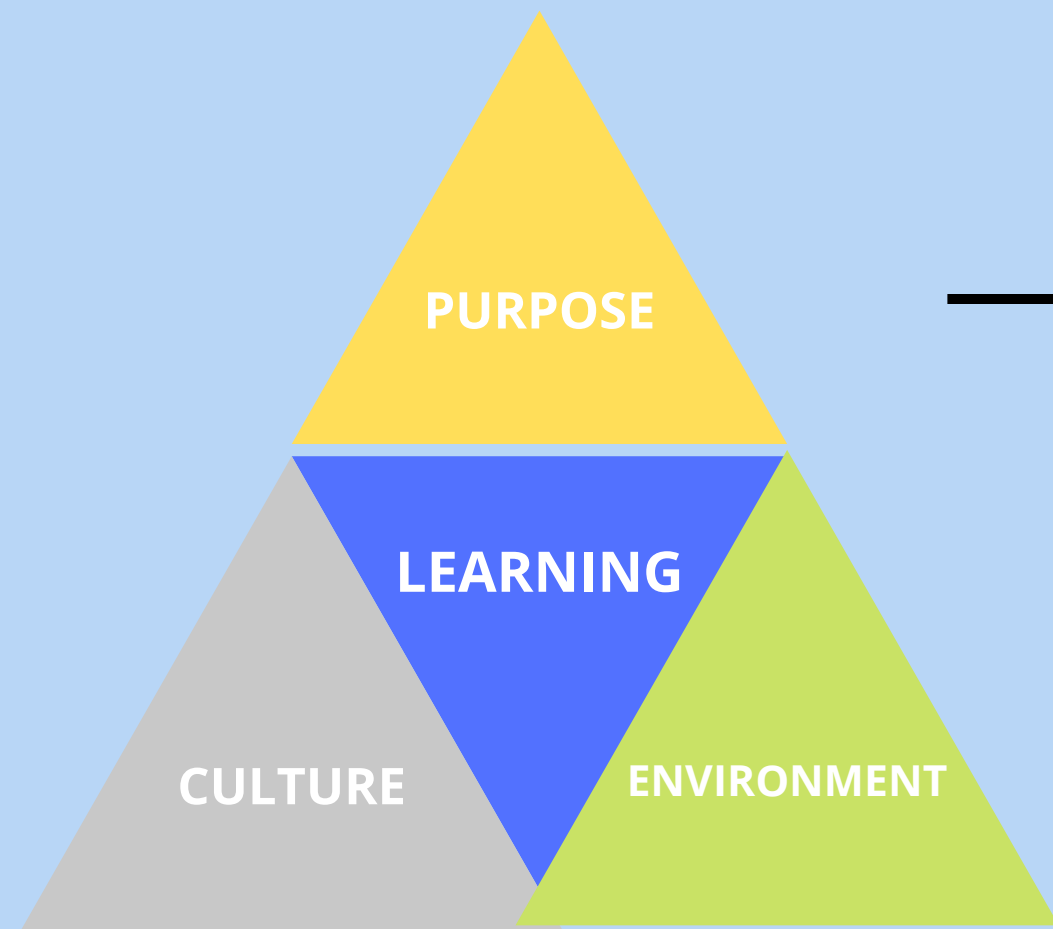


What is an IB education?



Part 1

IB mission

Part 2

IB learner profile

Part 3

IB programmes

Part 4

Curriculum and assessment

Part 5

Teaching and learning

MISSION

- The International Baccalaureate aims to develop inquiring, knowledgeable and caring young people who help to create a better and more peaceful world through intercultural understanding and respect.
- To this end the organization works with schools, governments and international organizations to develop challenging programmes of international education and rigorous assessment.
- These programmes encourage students across the world to become active, compassionate and lifelong learners who understand that other people, with their differences, can also be right.



What is an IB?

A worldwide community of schools, educators and students share their vision and mission to empower young people with the skills, values and knowledge to create a better and more peaceful world. This is the International Baccalaureate (IB).



Why the IB is different?

The IB's programmes are different from other curricula because they:

- encourage students of all ages to think critically and challenge assumptions
- develop independently of government and national systems, incorporating quality practice from research and our global community of schools
- encourage students of all ages to consider both local and global contexts
- develop multilingual students.





How to achieve the goal?

IB school communities develop internationally minded people who recognize their common humanity and shared guardianship of the planet. Central to this aim is international-mindedness.

Each of the IB programmes reflects a central desire to provide an education that enables students to make sense of the complexities of the world around them, as well as equipping them with the skills and dispositions needed for taking responsible action for the future.

THE IB LEARNER PROFILE



INQUIRERS
KNOWLEDGEABLE
THINKERS
COMMUNICATORS
PRINCIPLED
OPEN-MINDED
CARING
RISK-TAKERS
BALANCED
REFLECTIVE



**International
baccalaureate
programmes**

3-19 years

**Primary Years
Programme**

11-16 years

**Middle Years
Programme**

16-19 years

**Diploma
Programme**

16-19 years

**Career-related
Programme**

CURRICULUM FRAMEWORK

Broad

PYP

Balanced

MYP

DP

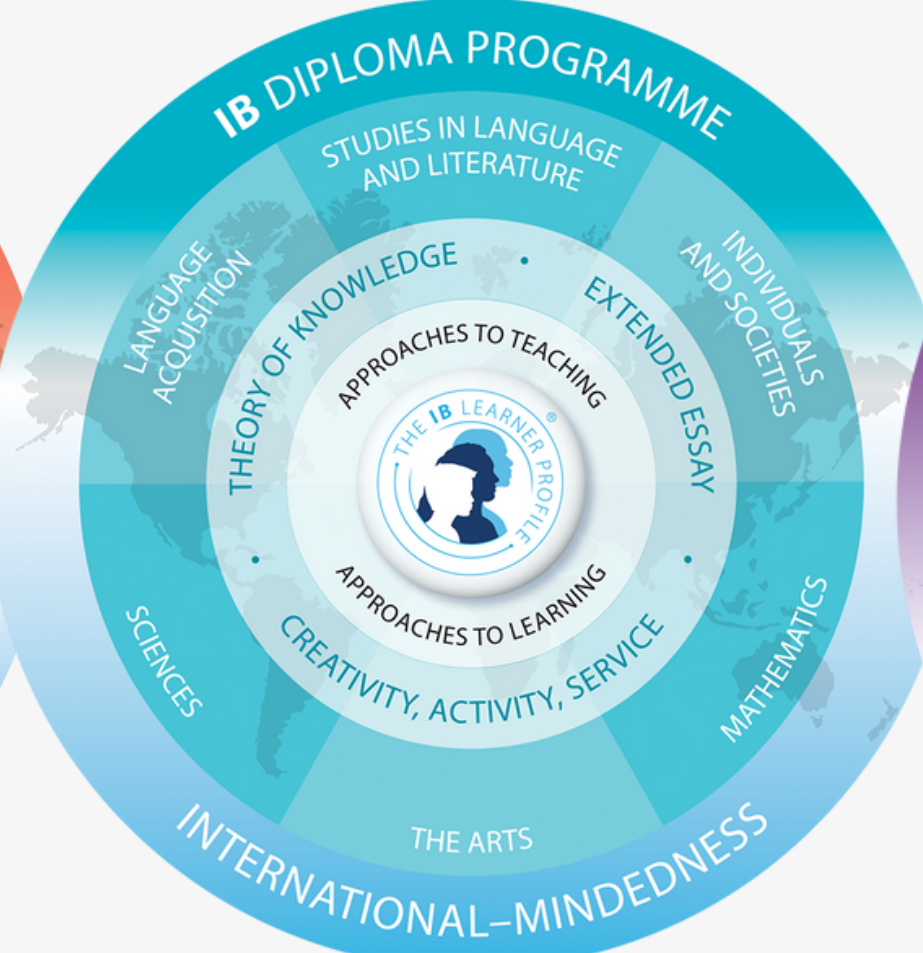
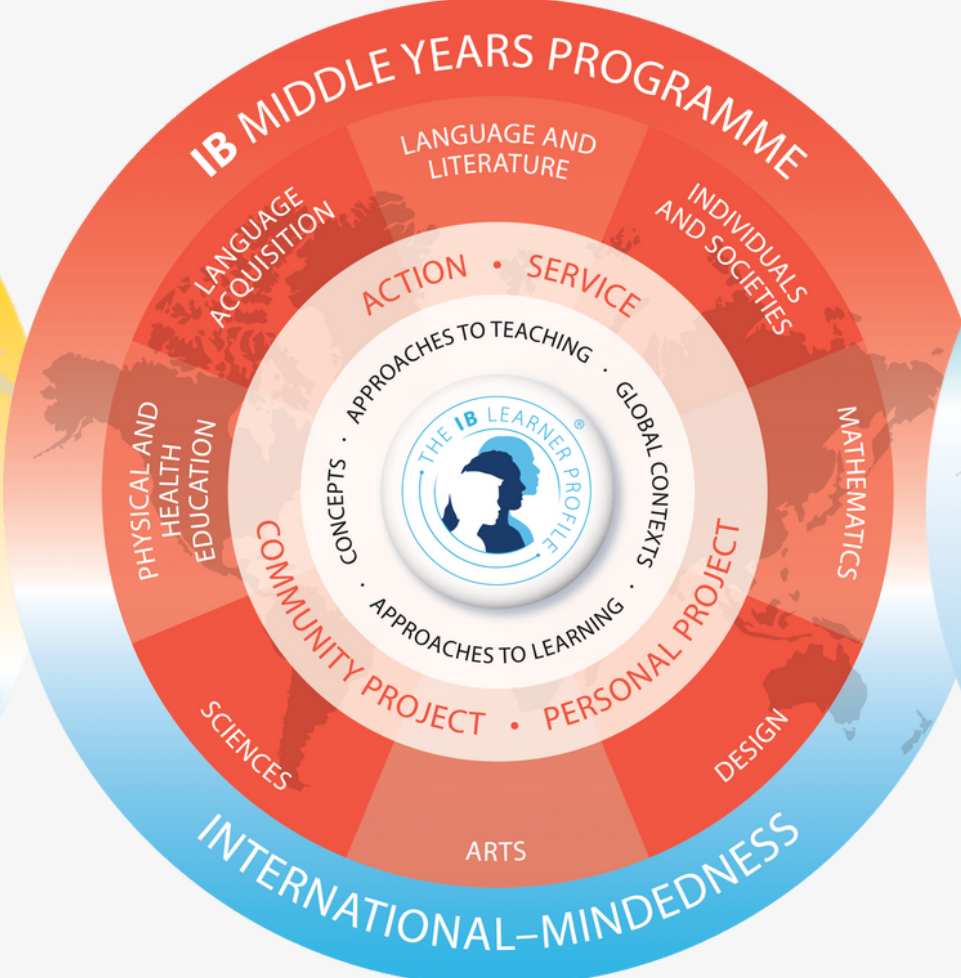
Conceptual

CP

Connected



Curriculum



ASSESSMENT



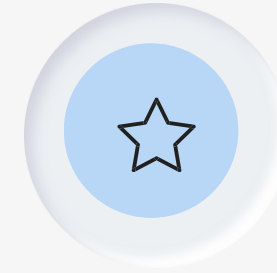
is ongoing,
varied and
integral to the
curriculum



is meaningful



is informative



balance validity
and reliability

TEACHING AND LEARNING

APPROACHES TO TEACHING

- Based on inquiry,
- Focused on conceptual understanding.
- Developed in local and global contexts.
- Focused on effective teamwork and collaboration
- Designed to remove barriers to learning
- Designed to remove barriers to learning

APPROACHES TO LEARNING

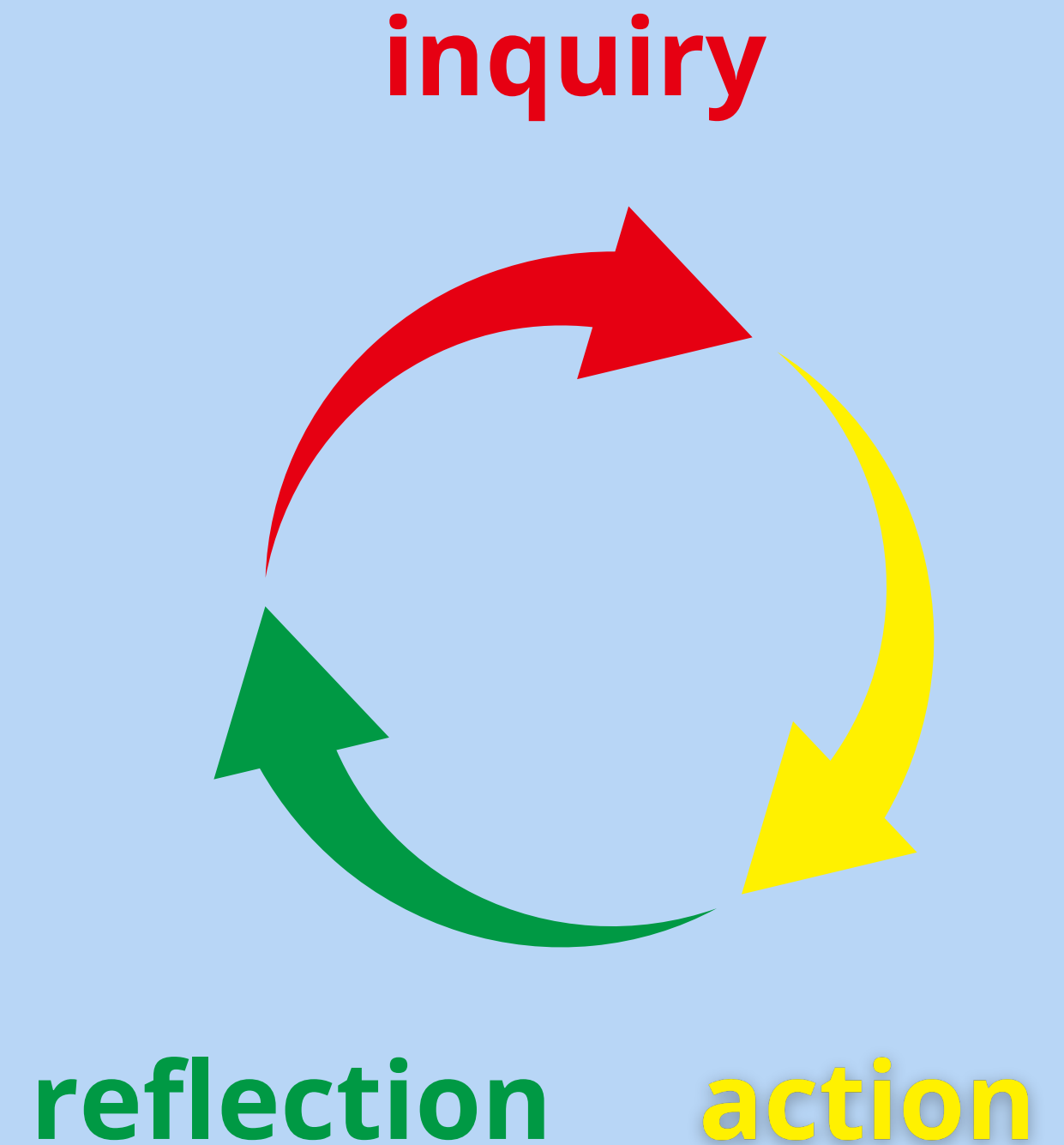
SELF-MANAGEMENT
SKILLS

RESEARCHS
KILLS

COMMUNICATION
SKILLS

SOCIAL
SKILLS

THINKING
SKILLS



**Thank you for
your attention!**